

## ACTIVITIES DURING THE SESSIONS.

- Games
- Reading
- Arts/Craft
- Beading
- Ball Games
- Puzzles
- Board Games

And a lot more fun activities.

Art/Craft some times can get messy  
the children will use art smocks  
provided by the centre



This Program will not open on the  
following days:

Australia Day.  
Victorian Labour Day.  
Easter Friday and Easter Monday.  
Anzac Day.  
Queens Birthday.

If there are insufficient bookings for any  
Curriculum and Pupil Free days, the  
decision whether to operate or not will  
be made by the Principal and  
Coordinator

### Compliments and Complaints

If at any time you have a concern or  
comment to make please do not  
hesitate to contact the coordinator or  
the principal.

### WODONGA CATHOLIC PARISH

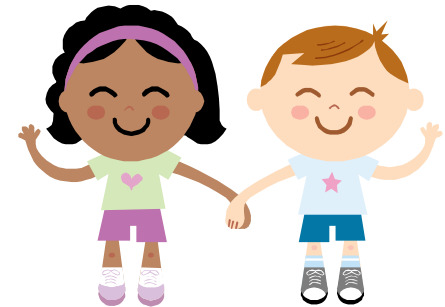
Principle: Jacqui Partington  
Director: Emily Roberts

## Wodonga Catholic Parish Outside School Hours Care



### BROCKLEY ST. CAMPUS

**Before School Care  
After School Care  
Vacation Care**



Director Emily Roberts

**0417 243 151**

## **HOURS OF CARE**

### Before School Care:

6.45am-8.45am (Mon-Fri)

### After School Care

3.10pm-6pm daily. (Mon-Fri)

### Vacation Care

6.45am-6pm (Mon-Fri) during the Victorian School Holidays.

### Pupil Free Days

Pupil Free Days 6.45am-6pm.  
(Mon-Fri)

## **FEES**

\$16 per Before School Care

\$16 per After School Care.

\$40 per day for Vacation Care and Pupil Free Days.

**\* There will be an additional cost for excursions.**

## **CHILDCARE BENEFIT**

Approved Childcare Benefit is available through the Family Assistance Office on 136150

## **ENROLMENTS**

Enrolment Forms can be obtained at the School Office ,OSHC building, or by emailing Emily, and must be filled out and returned prior to starting date.



## **MEDICATION**

All medication must be in the original packaging preferably with your child's name on it.

A medication form will need to be filled in by parents stating time and dosage required.

## **FOOD & DRINKS**

### After School Care.

We will be providing a healthy snack for afternoon tea each day. This will consist of fresh fruit and savoury or sweet snack.

### For Vacation Care.

all children need to bring a packed lunch, morning tea and drink bottle each day. fresh fruit will be supplied in the afternoons as well.

**Please do not send nut based foods with your children.**

## **PROGRAMMES**

The daily activities on offer for the children will be within the approved guidelines and will meet each child's needs and abilities, and will be educational and fun!

Activities are planned weather permitting.

Please ensure that your child is dressed appropriately for the activities being conducted on that day.